

UNDER CURRENT[®] SOLO



SINGLE MODULE WATER CULTURE SYSTEM

Current Culture H2O would like to thank you for purchasing a UC SOLO Water Culture System. Follow these simple instructions and you will be growing trees in no time!

PARTS



GROWTH MODULE



CCH2O LID 8



CCH2O NET POT(S)



DRAIN VALVE KIT



AIR HOSES



MEDIUM ROUND
AIRSTONES



AIR PUMP



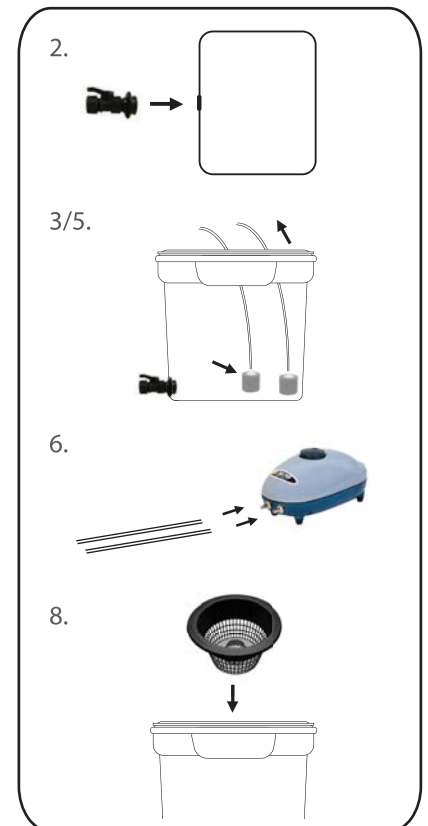
CULTURED SOLUTIONS
& GROWSTONE

ASSEMBLY INSTRUCTIONS

1. Unpack and identify all components.
2. Remove UNISEAL from DRAIN VALVE KIT, install in GROWTH MODULE base. Install DRAIN VALVE in UNISEAL. **Make sure valve is closed!**
3. Attach AIR HOSES to MEDIUM ROUND AIRSTONES and place in base of GROWTH MODULE.
4. Install CCH2O LID 8 atop GROWTH MODULE, leaving PORT-HOLE COVER off.
5. Pull the AIR HOSES up and out CCH2O LID PORT-HOLE. Install PORT-HOLE COVER.
6. Attach AIR HOSES to AIR PUMP. *****Place AIR PUMP above water level.**
7. Install CCH2O NET POT 8 in CCH2O LID 8.

GROWING INSTRUCTIONS

1. Fill GROWTH MODULE with purified water to top of planting deck in CCH2O NET POT. (8 gallon units will operate with 6-7 gallons of solution, 13 gallon units will operate with 10-11 gallons of solution)
2. Plug in AIR PUMP. *****Place AIR PUMP above water level.**
3. Add included CULTURED SOLUTIONS VEG A/B to GROWTH MODULE at recommended dilution. Adjust pH to 5.8 - 6.2.
4. Transplant rooted cutting/seedling onto planting deck in CCH2O NET POT, fill NET POT with GROWSTONE (rinse GROWSTONE thoroughly before use) to rim.
5. Install CCH2O NET POT with plant into CCH2O LID.



CULTIVATING HYDROPONIC EVOLUTION[®]

www.cch2o.com

twitter.com/currentculture
facebook.com/currentcultureh2o