



## UC Spin-Tight Bulkhead Assembly and Installation Recommendations

Thank you for purchasing our UC Spin-Tight Bulkheads. To ensure your bulkheads function properly, follow the instructions below for installation. In the event you have a question, please use our Product Support form: <https://cch2o.com/hydroponics-faq/>



**NOTE:** Take extra precautions and educate yourself when working with the tools and supplies necessary to bond and plumb plastic and bulkheads correctly. Consult with an online plumbing tutorial if further insight is necessary on the specifics of cutting and fitting pipe.

## DRILLING

Be certain to take great care in drilling your holes! An improperly drilled hole will result in a poor seal and leakage. When drilling holes in containers to accept UC Spin Tight Bulkheads, we recommended drilling the following sizes:

2" Bulkhead = 2-7/8" Hole

3" Bulkhead = 3-7/8" Hole

## GLUING

UC Spin Tight Bulkheads are made of ABS plastic and designed with one male threaded connection (which enters hole in module) and one socket side which is designed to accept 2" or 3" schedule 40 PVC. To make this pipe to bulkhead connection, we recommend the appropriate glue be used relative to the pipe material being installed.

**ABS to PVC:** If connecting to PVC use glue suitable for bonding ABS to PVC. We recommend WELD ON ABS/PVC GLUE 794.

**ABS to ABS:** If connecting to ABS use glue suitable for bonding ABS to ABS. We recommend WELD ON ABS GLUE 773.

If these glues are not available, use whatever comparable substitute you can source.

## INSTALLATION

Factors such as hole distortion, un-level floors and inattention to detail can all play a roll bulkheads not functioning properly. For best results be cautious, take your time and use care when installing UC Spin-Tight Bulkheads. Always consult a professional if necessary.



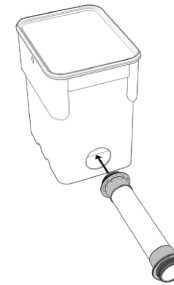
**NOTE:** Do NOT use and lubricants or adhesives on the UC Spin Tight Bulkhead during the installation process.

1



1) Press flat gasket down to fully seat and install on flat flange on the outside of the bulkhead body. Be certain the gasket is fitted onto the flange as improper fitting will lead to leaks.

2



2) Insert male threaded side of bulkhead through the hole in your container and press the fitted gasket firmly against the side wall of container. Visually inspect for gaps.

3) Place Bulkhead Nut on male threads and begin to hand tighten.

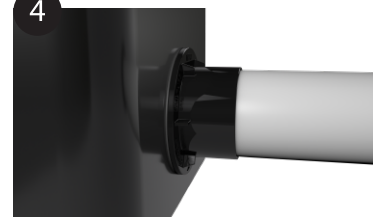
4) Once Bulkhead Nut is hand tightened, visually inspect both sides of the container for gaps.

3



5) Once all bulkheads are installed using steps 1-4, follow up by tightening nuts with supplied bulkhead wrench until firmly secured ~1/4 turn. Do not over tighten as this may lead to leakage.

4



6) Once properly installed you can now begin to fill your system with water to check for leaks. For initial inspection, we recommend filling to just above the top of bulkhead and let stand for a half hour before continuing inspection. If a leak is discovered, you can use the bulkhead wrench to tighten further.

7) If additional tightening does not remedy seal it may be necessary to repeat steps 1-5 again to reseat bulkhead properly. If issues persist, please contact CCH2O Product Support for more assistance.

5



6

